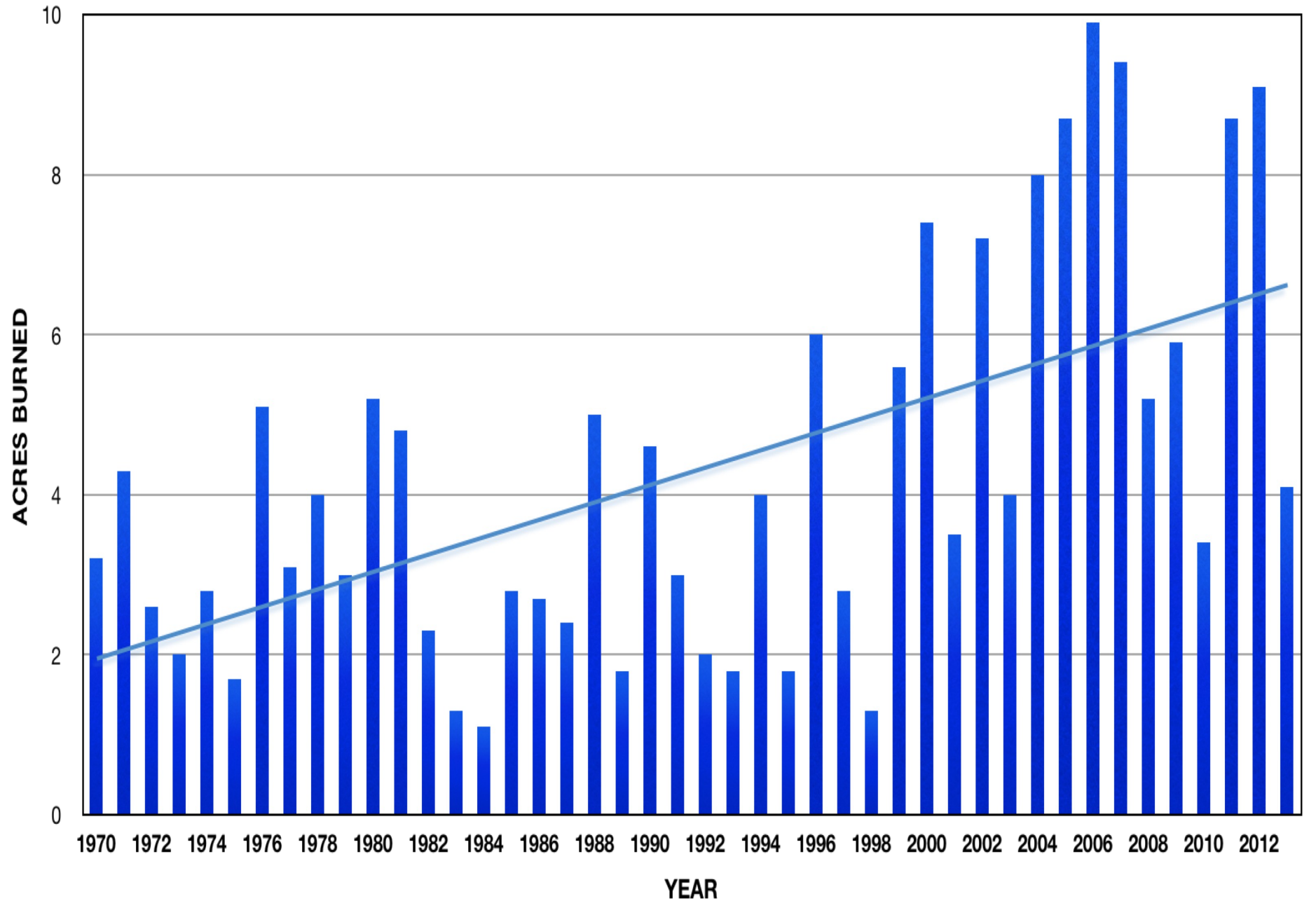
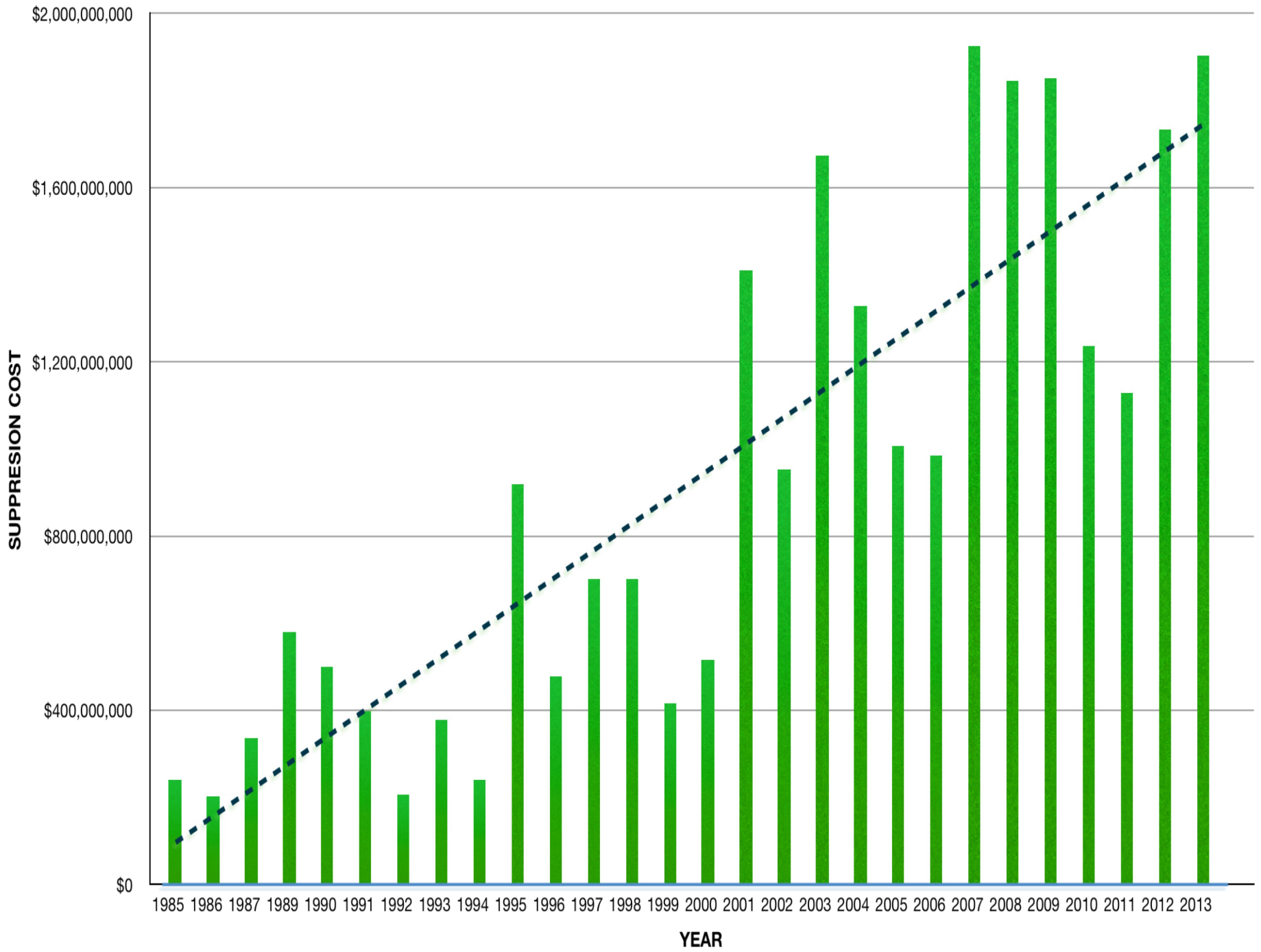


Wildfire Acres Burned

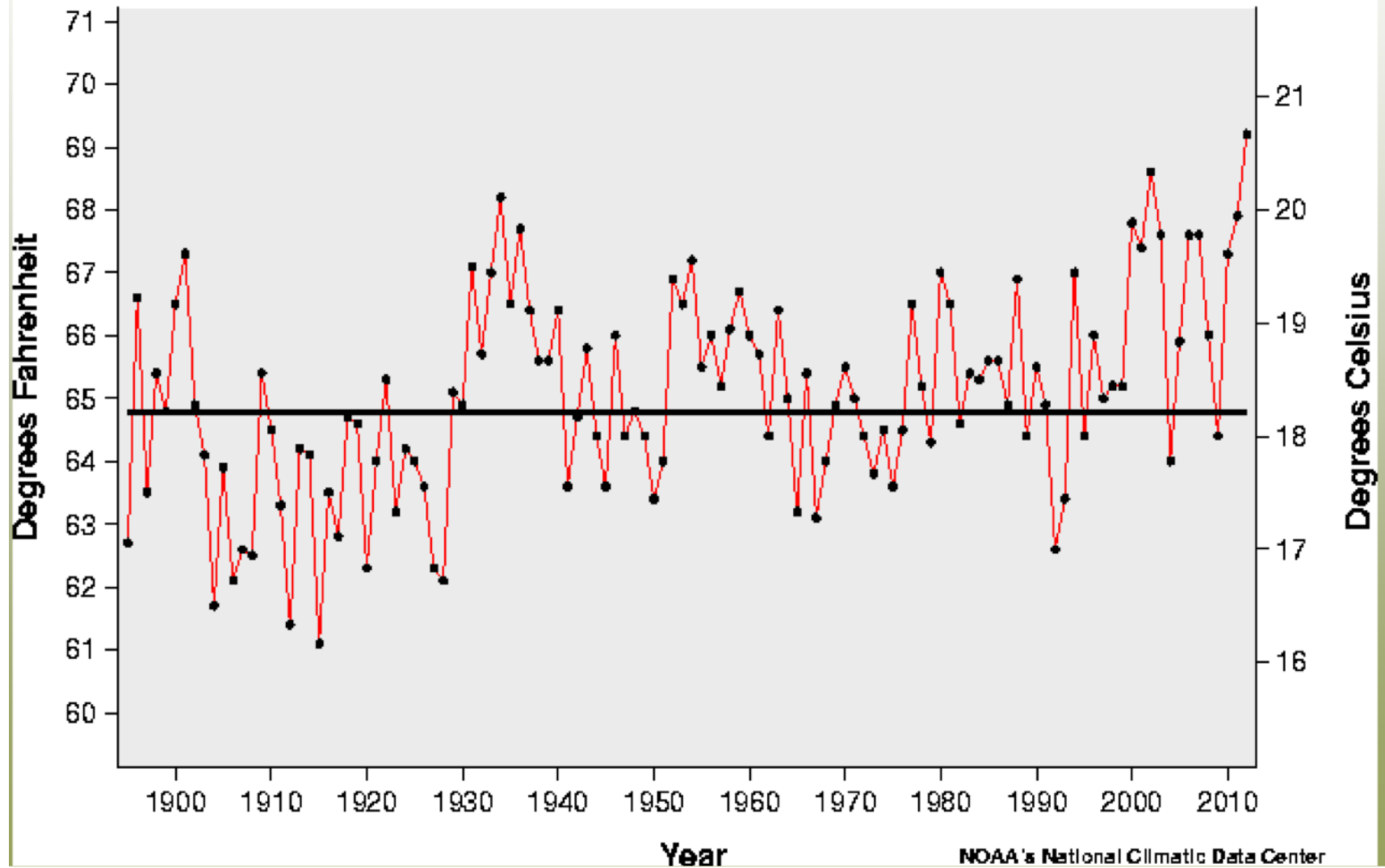


FEDERAL FIRE FIGHTING COSTS

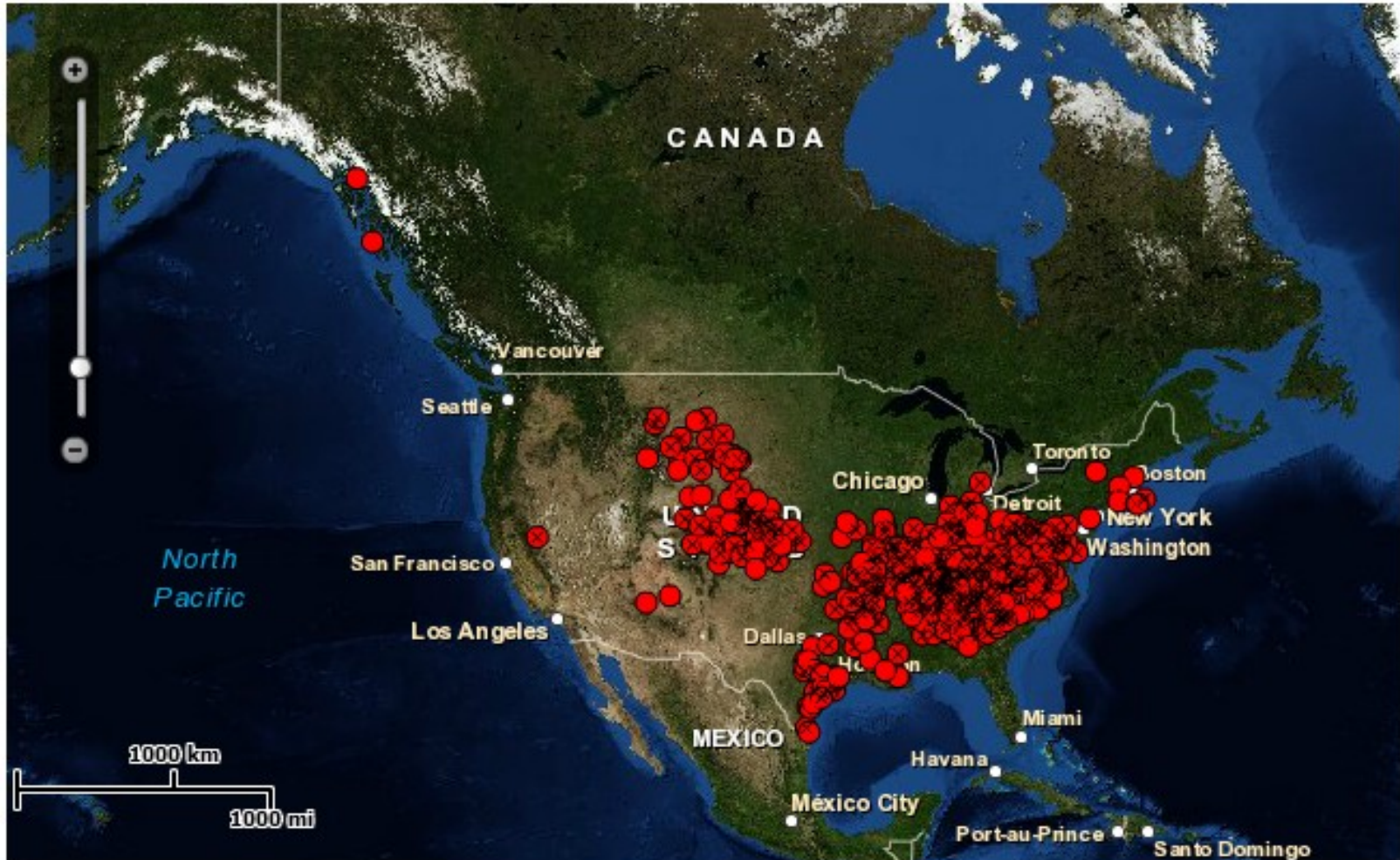


(Jun - Aug)

— Actual Temperature
— Average Temperature



U.S. Monthly Highest Max Temperature Records set in June 2012



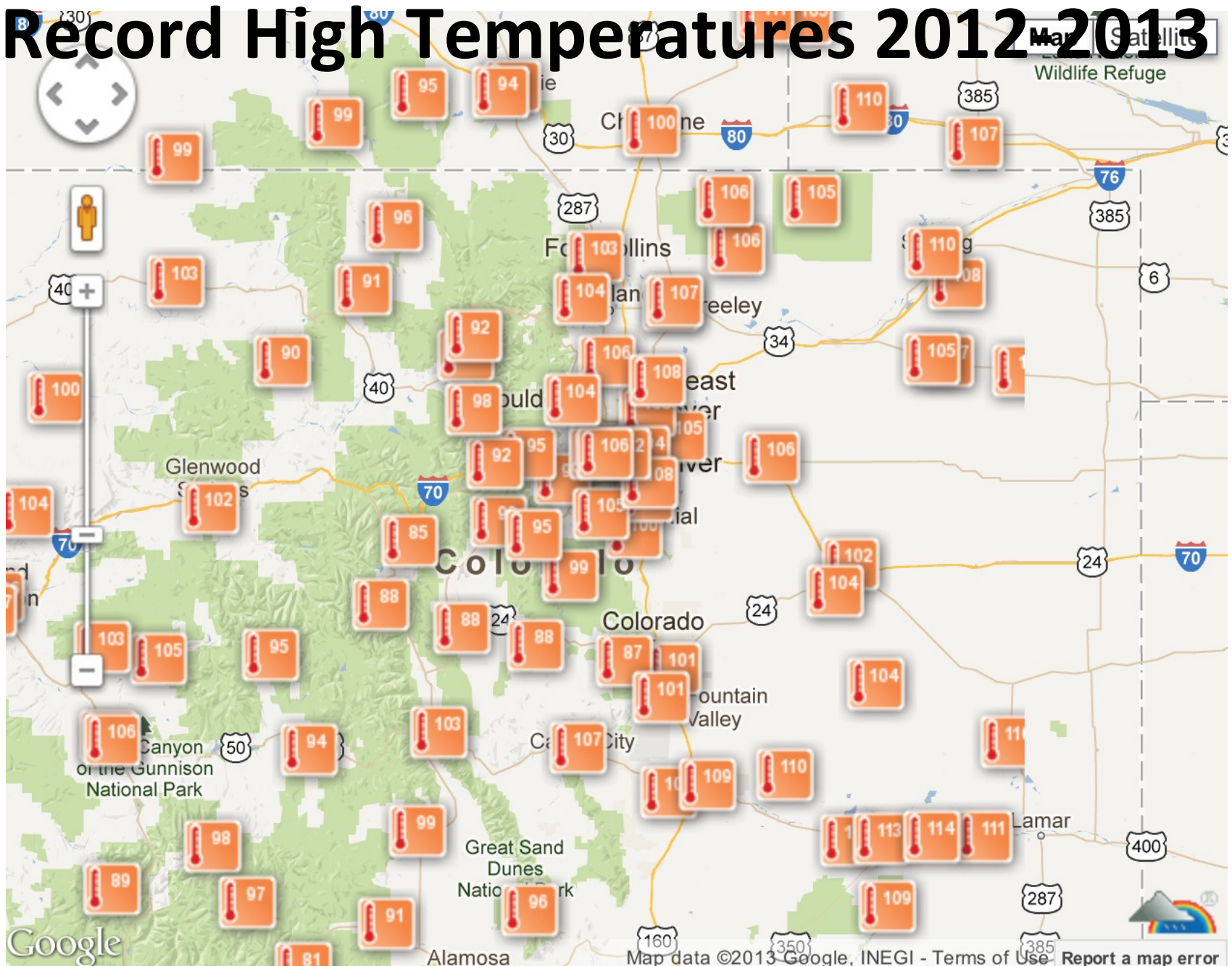
Out of a possible 174,182 records: 410 (Broken) + 235 (Tied) = 645 Total

NOTE: These records are based on the historical daily observations archived in NCDC's Cooperative Summary of the Day data set and preliminary reports from Cooperative Observers and First Order National Weather Service stations, and as such are subject to change.

The Period of Record (POR) represents the number of years with a minimum of 50% data completeness. All stations have a Period of Record of at least 30 years.

<http://lolako.com/category/conservation-and-the-environment/weather-related-topics/>

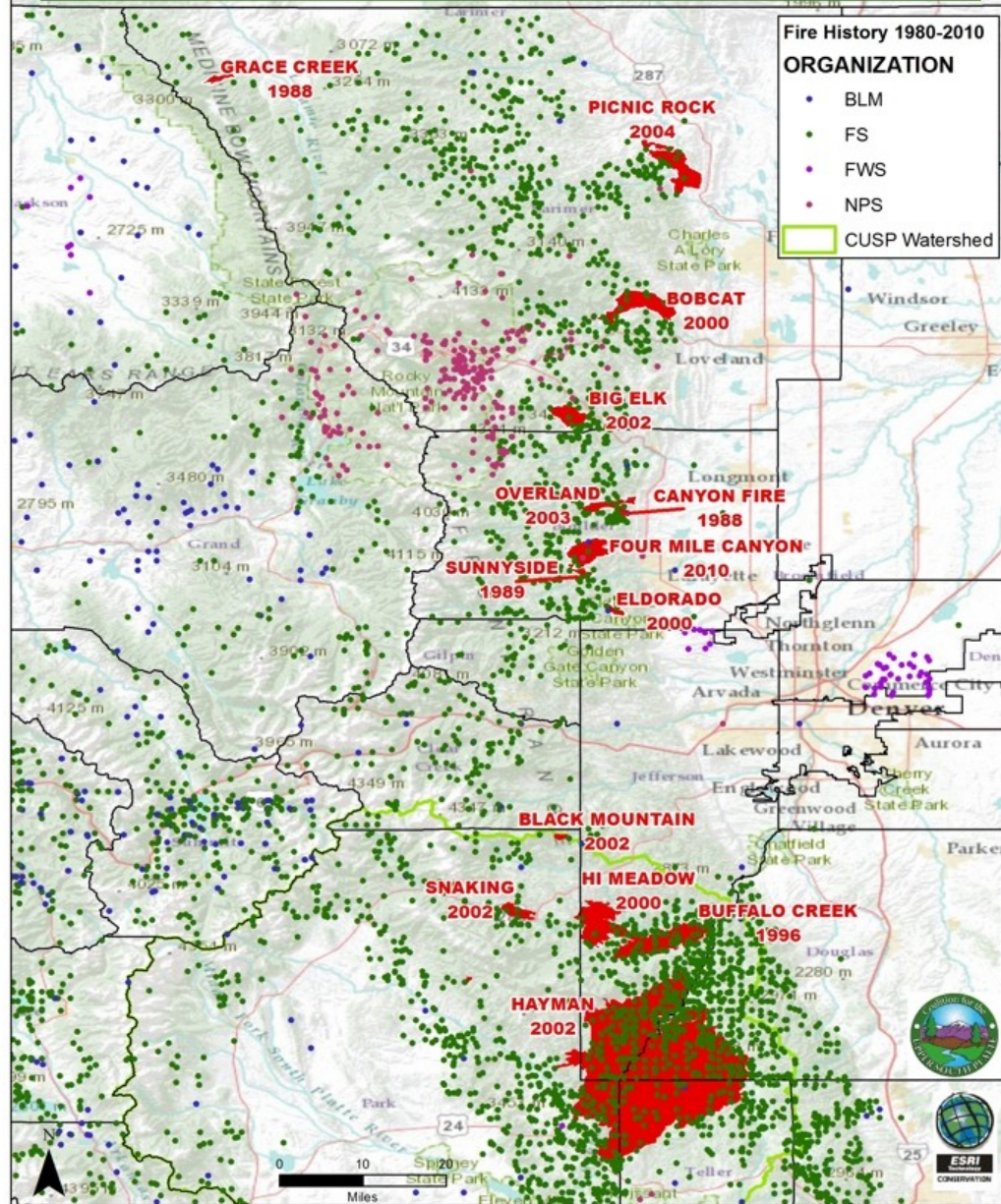
Record High Temperatures 2012-2013

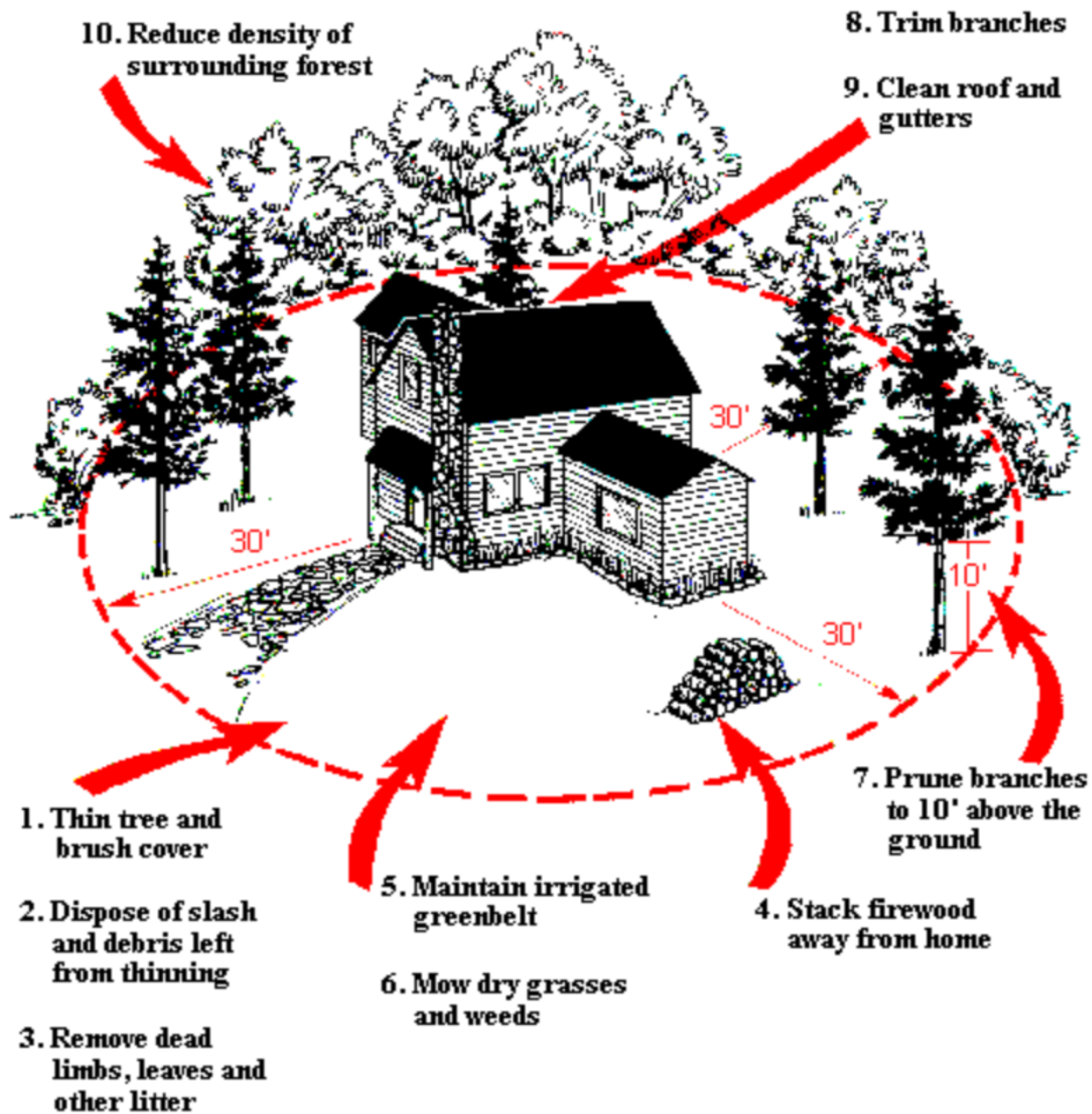


Google

Map data ©2013 Google, INEGI - Terms of Use Report a map error

FRONT RANGE FOREST FIRES









United States
Department
of Agriculture

Forest Service

Rocky Mountain
Research Station

General Technical
Report RMRS-GTR-310

August 2013

Restoring Composition and Structure in Southwestern Frequent-Fire Forests:

A science-based framework for improving ecosystem resiliency

Richard T. Reynolds, Andrew J. Sánchez Meador, James A. Youtz,
Tessa Nicolet, Megan S. Matonis, Patrick L. Jackson,
Donald G. DeLorenzo, Andrew D. Graves







